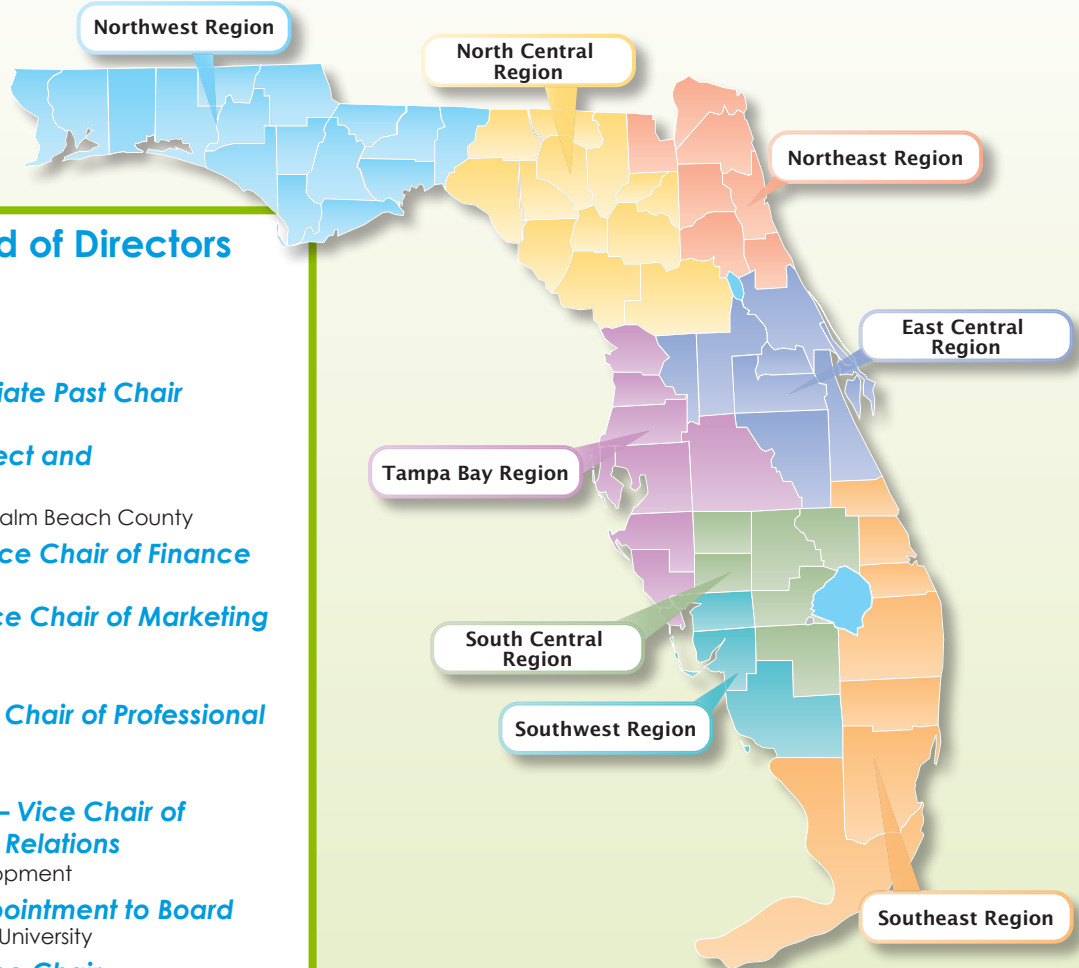


READY TO JOIN FEDDC?

We welcome you to contact us by emailing **Jill Blackman**, Manager, Membership & Programs at jblackman@fedconline.org to select the best membership option for your organization.

EDUCATE. ADVOCATE. CONNECT.



FEDC 2018-19 Board of Directors

Executive Committee

Crystal Stiles – Chair

Florida Power & Light

Cathy Chambers – Immediate Past Chair

JAXUSA Partnership

Kelly Smallridge – Chair-Elect and Vice Chair of Advocacy

Business Development Board of Palm Beach County

Marc Hoenstine, CEcD – Vice Chair of Finance

Duke Energy

Michelle Bauer, CEcD – Vice Chair of Marketing & Communications

Tampa-Hillsborough EDC

Keith Norden, CEcD – Vice Chair of Professional Development

Team Volusia EDC

Suzanne Christman, CEcD – Vice Chair of Membership and Regional Relations

Pinellas County Economic Development

Andrew Duffell – Chair Appointment to Board

Research Park at Florida Atlantic University

Jennifer Taylor – Conference Chair

Central Florida Development Council

Board Appointments and Ex-Officios

Andra S. Cornelius, CEcD – Ex Officio

CareerSource Florida

Jeff Hendry – Ex-Officio

EFI Stakeholders Council

Mike Myhre – Ex-Officio

Florida SBDC Network

Tim Vanderhoof – Ex-Officio

Enterprise Florida, Inc.

Mark Wilson – Ex-Officio

The Florida Chamber of Commerce

Maria Grulich – Ex-Officio

Florida Realtors

Kristi Bartlett, CEcD – Chair Appointment to Board

City of Coral Springs

Scott Luth – Chair Appointment to Board

Florida West Economic Development Alliance

Ed Randolph – Chair Appointment to Board

City of Jacksonville

Regional Directors

Rick Byars – Northwest Regional Director

Gulf Power

Susan Ramsey – North Central Regional Director

Hamilton County Development Authority

Helga Van Eckert – Northeast Regional Director

Department of Economic Opportunity, Flagler County

Christina Morris, CEcD – East Central Regional Director

Osceola County Board of County Commissioners

Jaksa Petrovic, MA, CEcD, EDP – Tampa Bay Regional Director

Hillsborough County Economic Development Dept.

Sarah Pelham – South Central Regional Director

Hardee County Economic Development

Lucienne Pears – Southwest Regional Director

Babcock Ranch

Dyan Brasington, CEcD – Southeast Regional Director

The Beacon Council